



Benha University
Faculty of Engineering
Department of Architectural Engineering

AE 1111 | Architecture Design (1A) | Lecture 4

Architectural Elevations



DR. MONA SHEDID
*ASSOCIATED PROFESSOR , FACULTY OF ENGINEERING,
BENHA UNIVERSITY*



Lecture 4

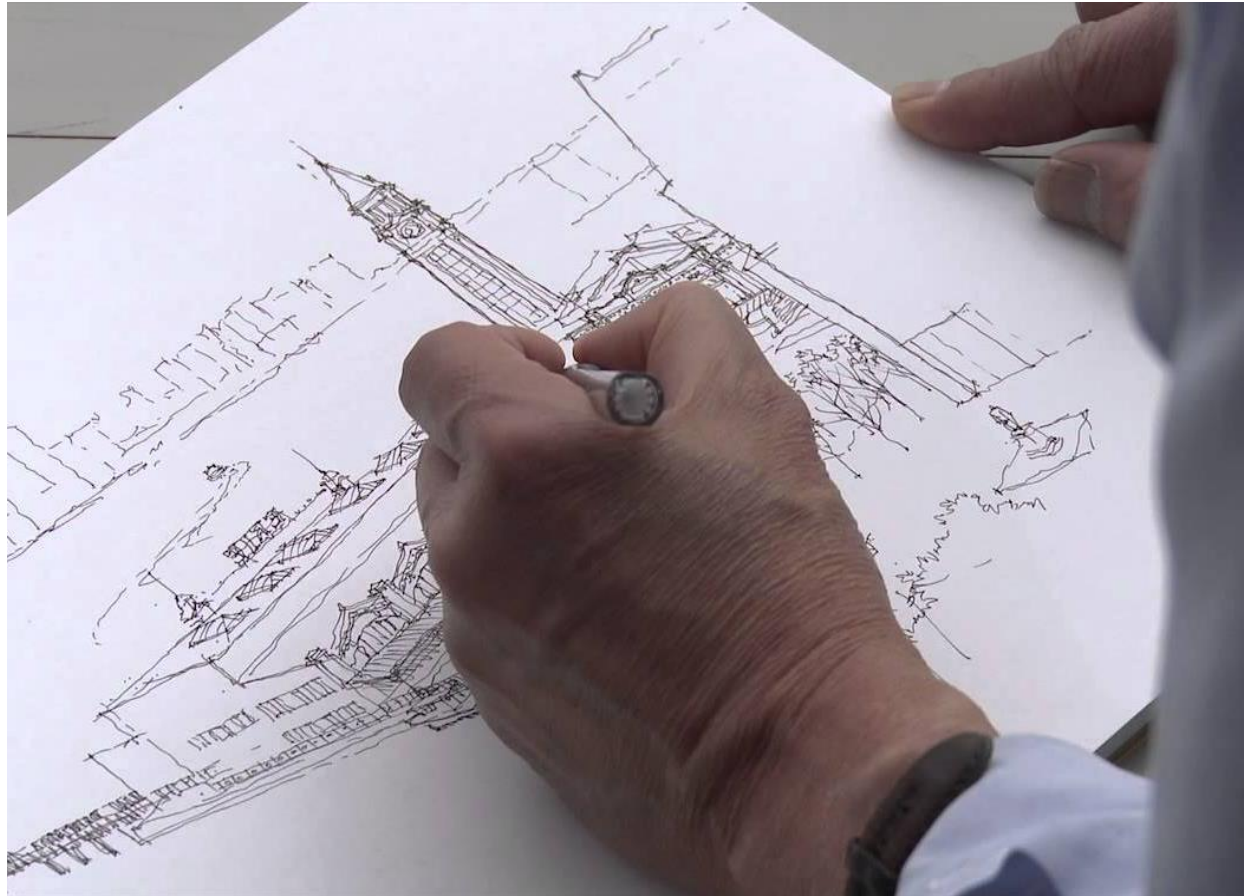
1. Introduction

4. What is Arch. Elevation?

- Building Elevation
- Spatial Depth Cues
- Scale & Detail

5. How to Draw an Arch. Elevation?

- Steps
- Examples



Architectural Elevations

1



INTRODUCTION

MULTI-VIEW DRAWINGS

└ Plans
└ Layout } **Horizontal Views**

└ Elevations
└ Sections } **Vertical Views**

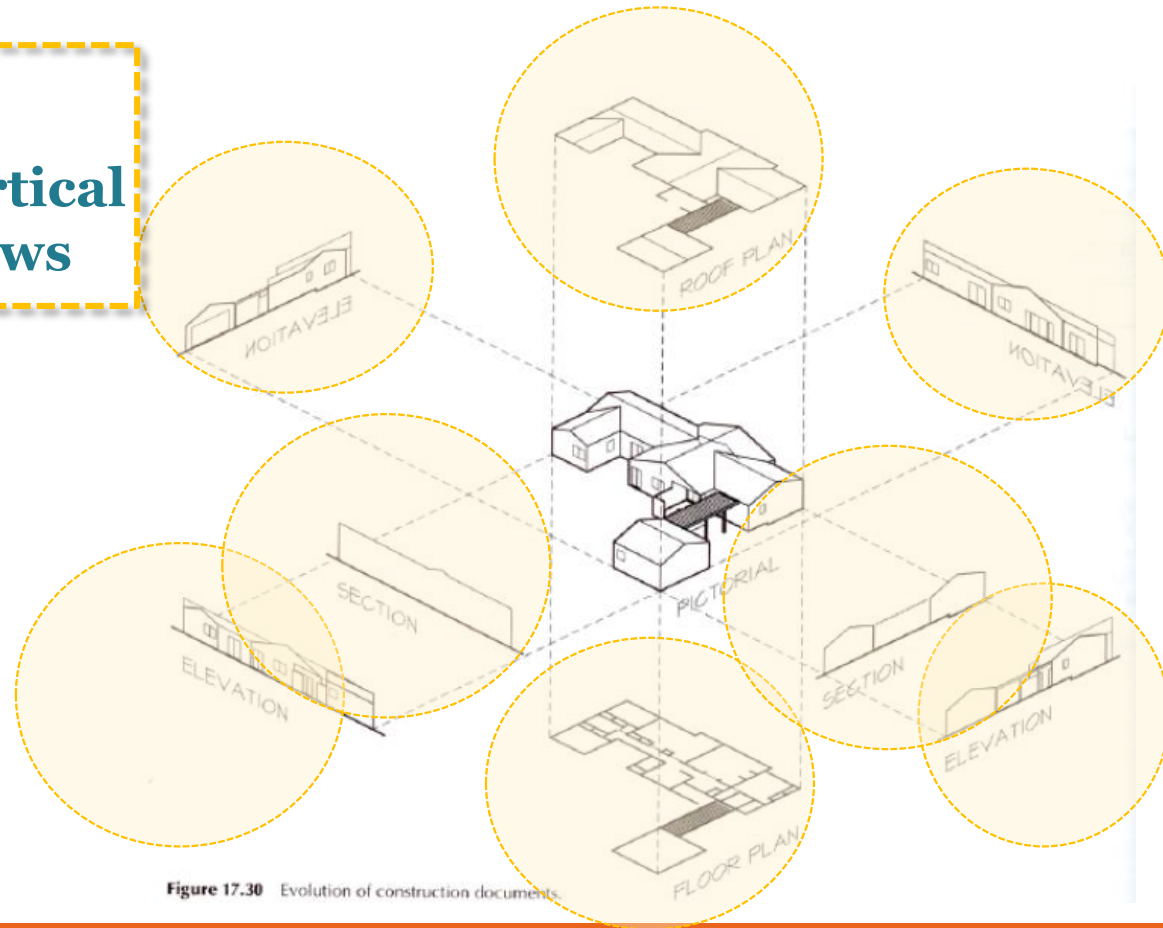


Figure 17.30 Evolution of construction documents

2

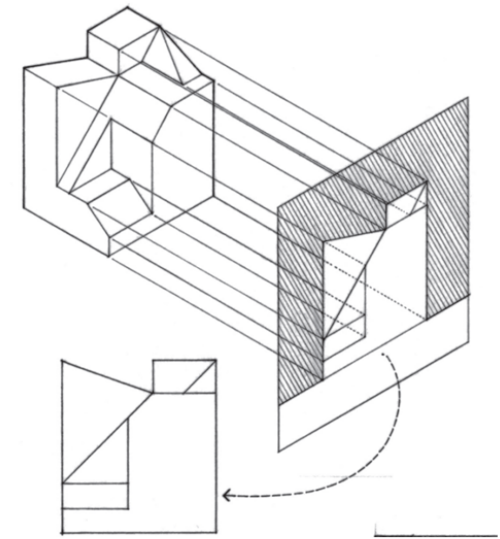
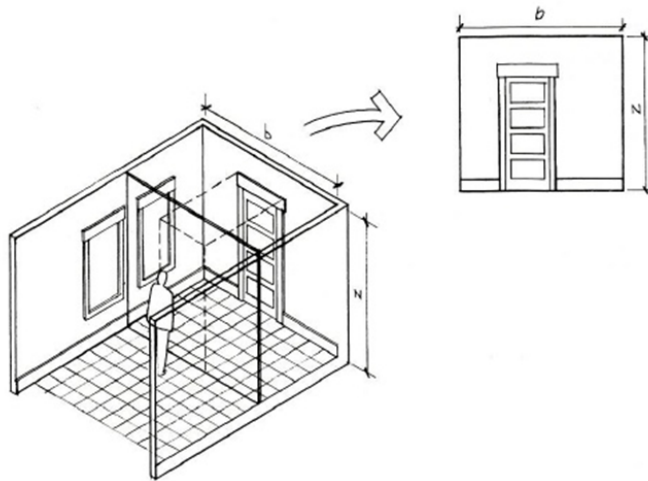


WHAT IS AN ARCHITECTURAL ELEVATION?

BUILDING ELEVATION

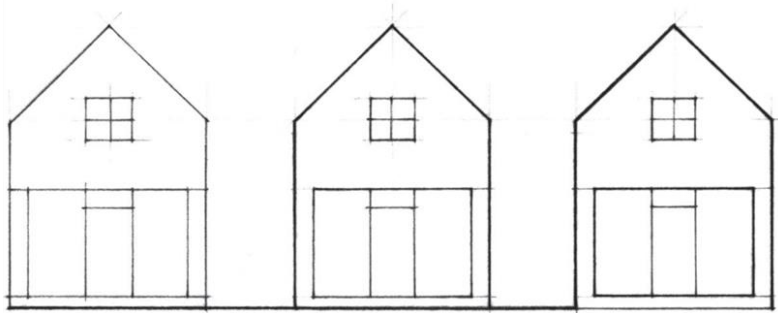
An elevation is an orthographic projection of a construction on a vertical picture plane parallel to one of its principal faces.

- It offers a view that closely resembles the natural appearance of the object.

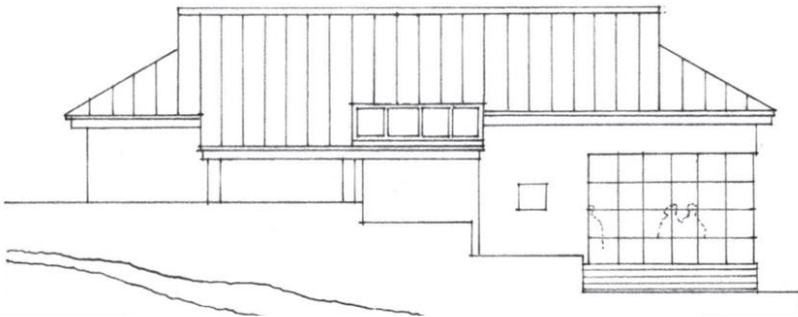


They emphasize the exterior vertical faces of a building parallel to the picture plane and define its silhouette in space. They can also illustrate the texture, pattern of cladding materials, openings.

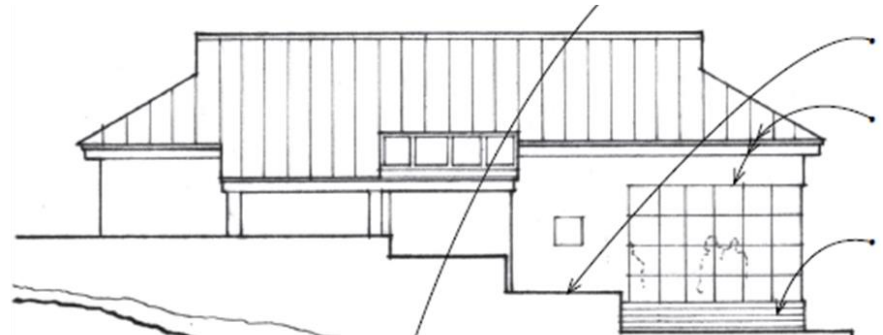
SPATIAL DEPTH CUES



To convey a sense of depth, we must use a hierarchy of line weights or a range of tonal values.

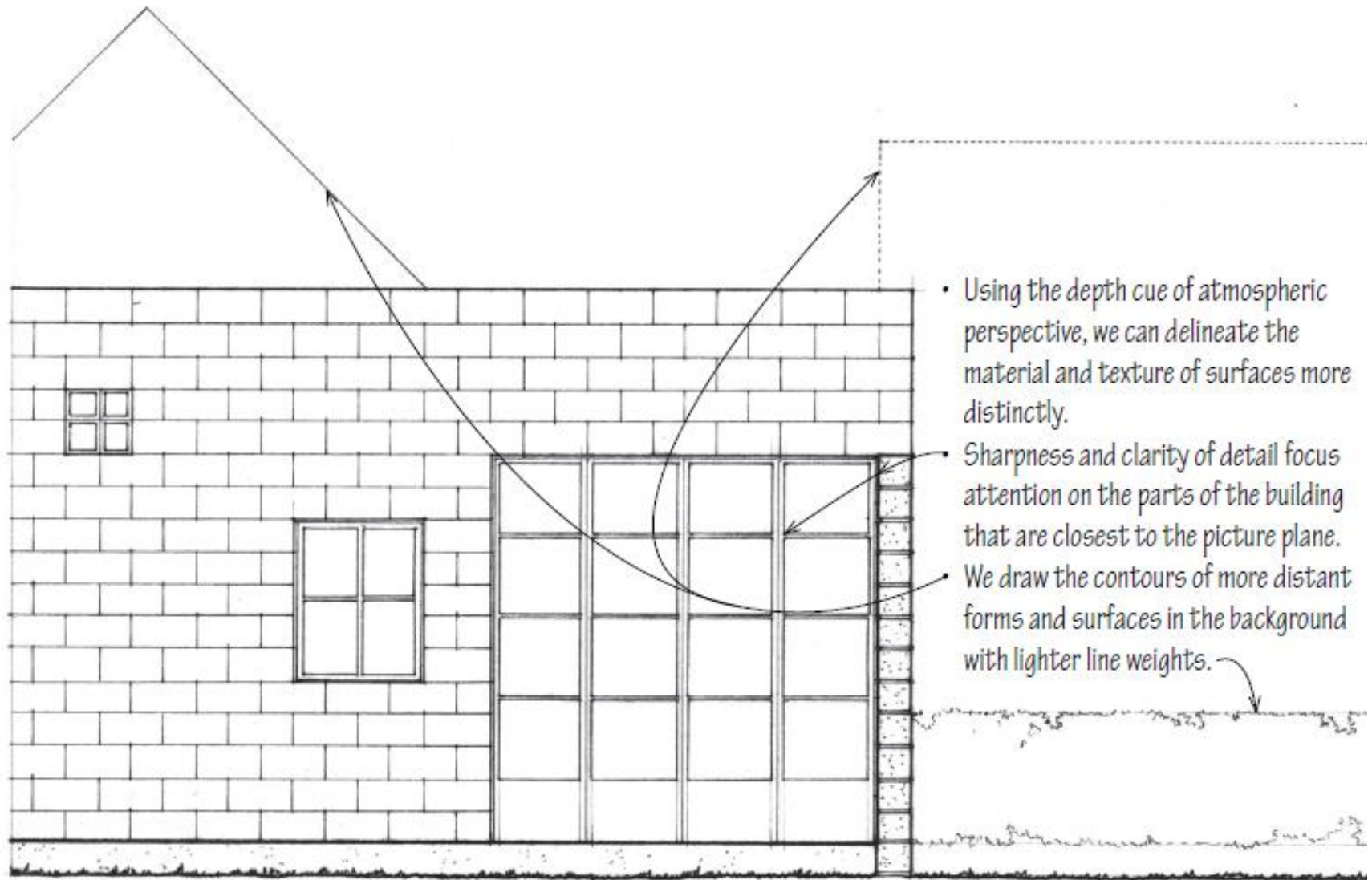


This is a building elevation drawn with a single line weight.



This drawing uses a hierarchy of line weights to convey depth

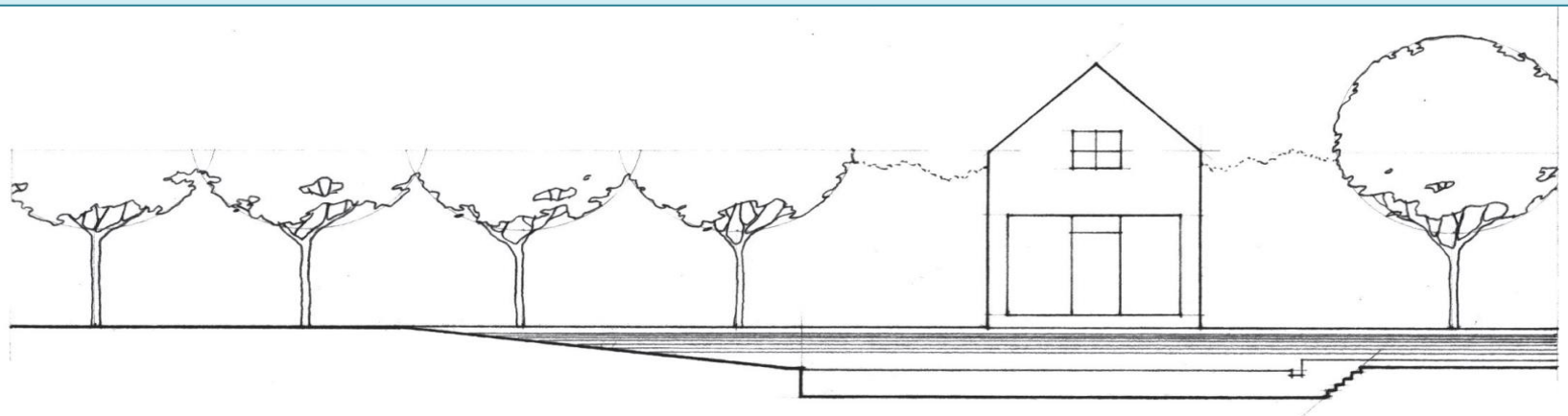
SPATIAL DEPTH CUES



SPATIAL DEPTH CUES

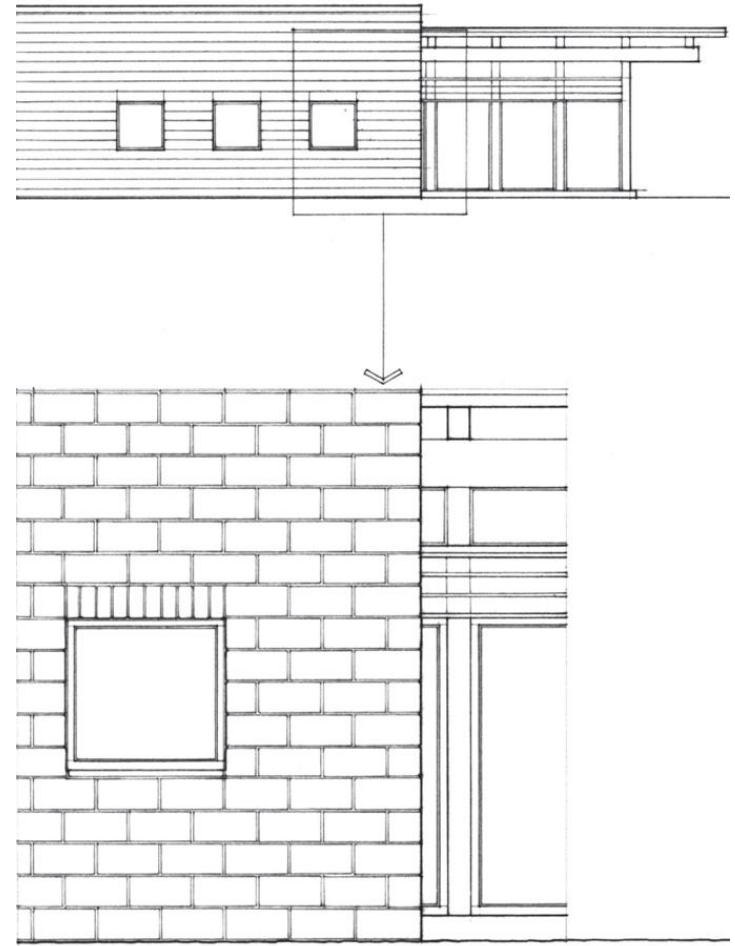
In an elevation drawing, we establish three pictorial zones:

- 1- The foreground space between the section cut and the facade of the Building.
- 2- The middle-ground that the building itself occupies.
- 3- The background of sky, landscape, or structures beyond the building.



SCALE & DETAIL

- We usually draw building elevations at the same scale as the accompanying floor.
- We may use a smaller scale for large buildings and complexes.
- The larger the scale of an elevation, the more detail we must include.
- Including human figures in section drawings establishes a sense of scale



SCALE & DETAIL

Representing Materials



Concrete or Plaster



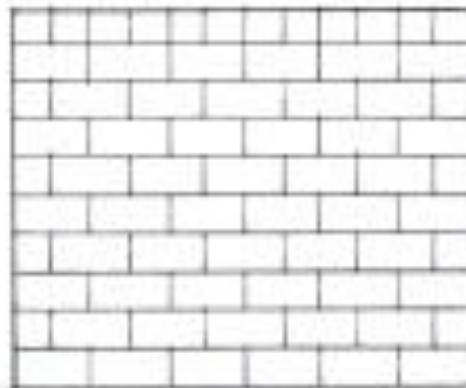
Concrete or Plaster



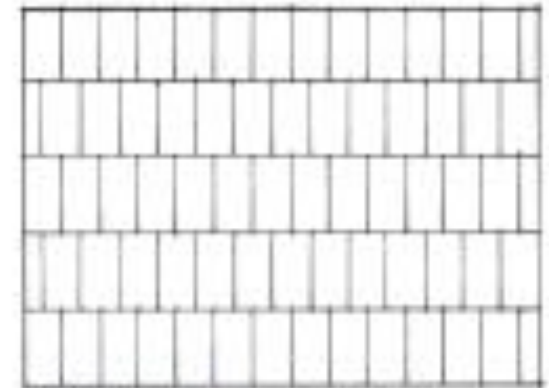
Board-Formed Concrete



Brick Masonry



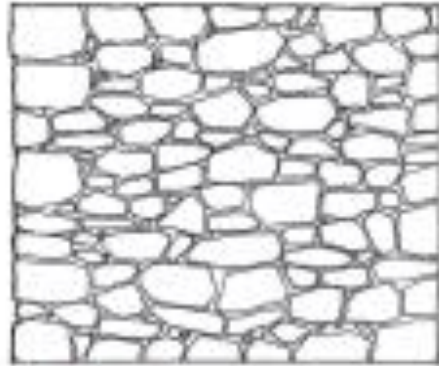
Concrete Masonry



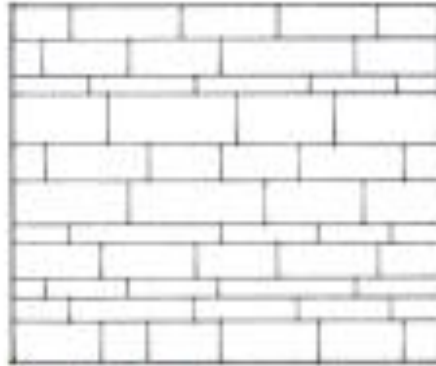
Concrete Masonry

SCALE & DETAIL

Representing Materials



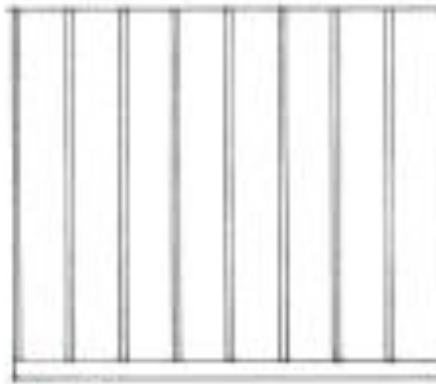
Stone Masonry



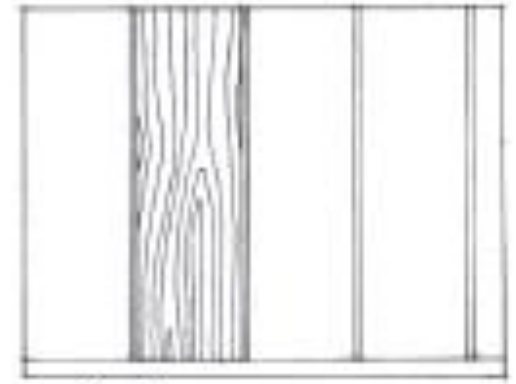
Stone Masonry



Wood Siding



Wood Siding



Wood Paneling

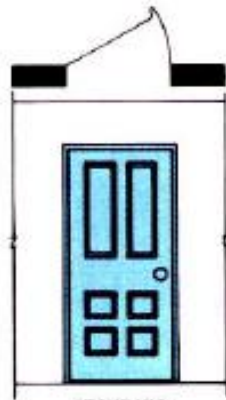
SCALE & DETAIL

Representing Materials

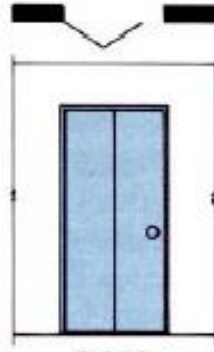


SCALE & DETAIL

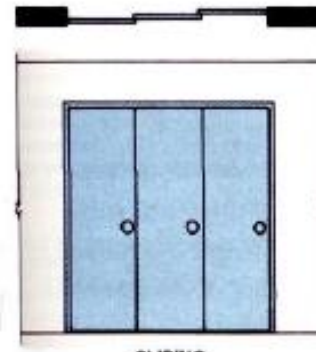
Representing Materials



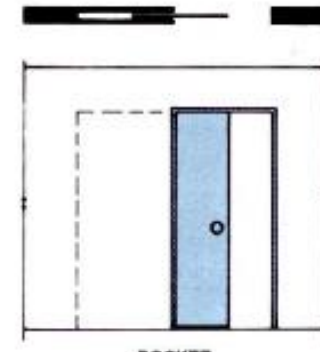
STANDARD



BI-FOLD



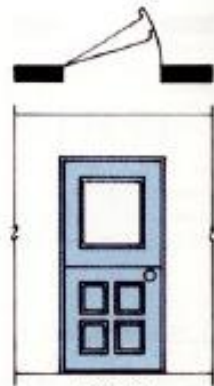
SLIDING



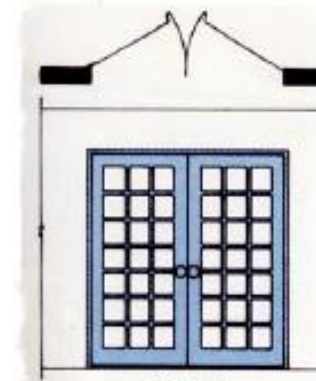
POCKET



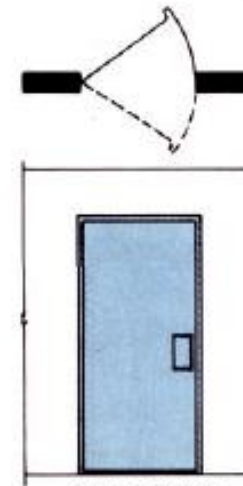
ACCORDIAN



DUTCH



FRENCH



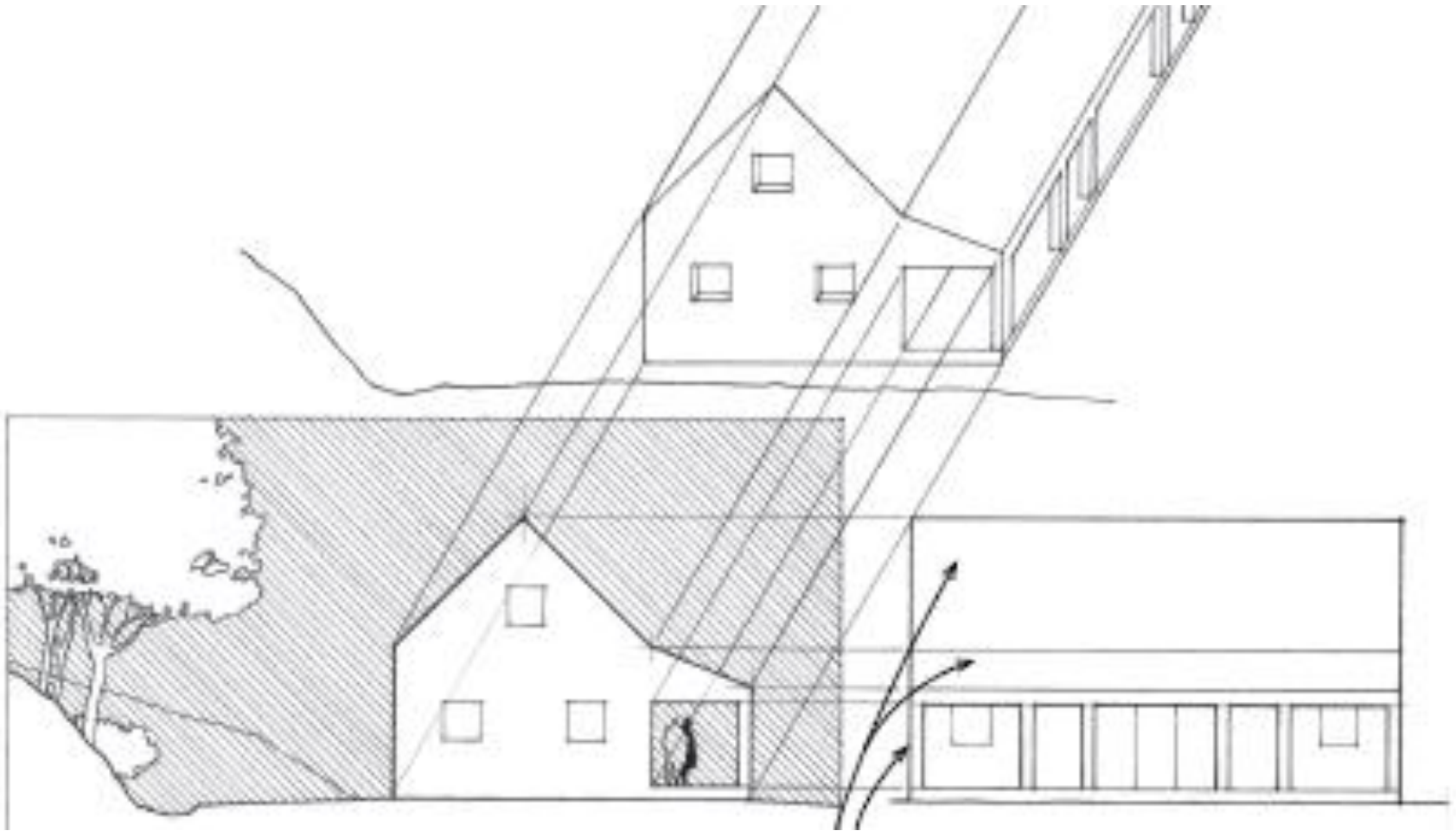
DOUBLE-ACTION
(SWINGING)

3

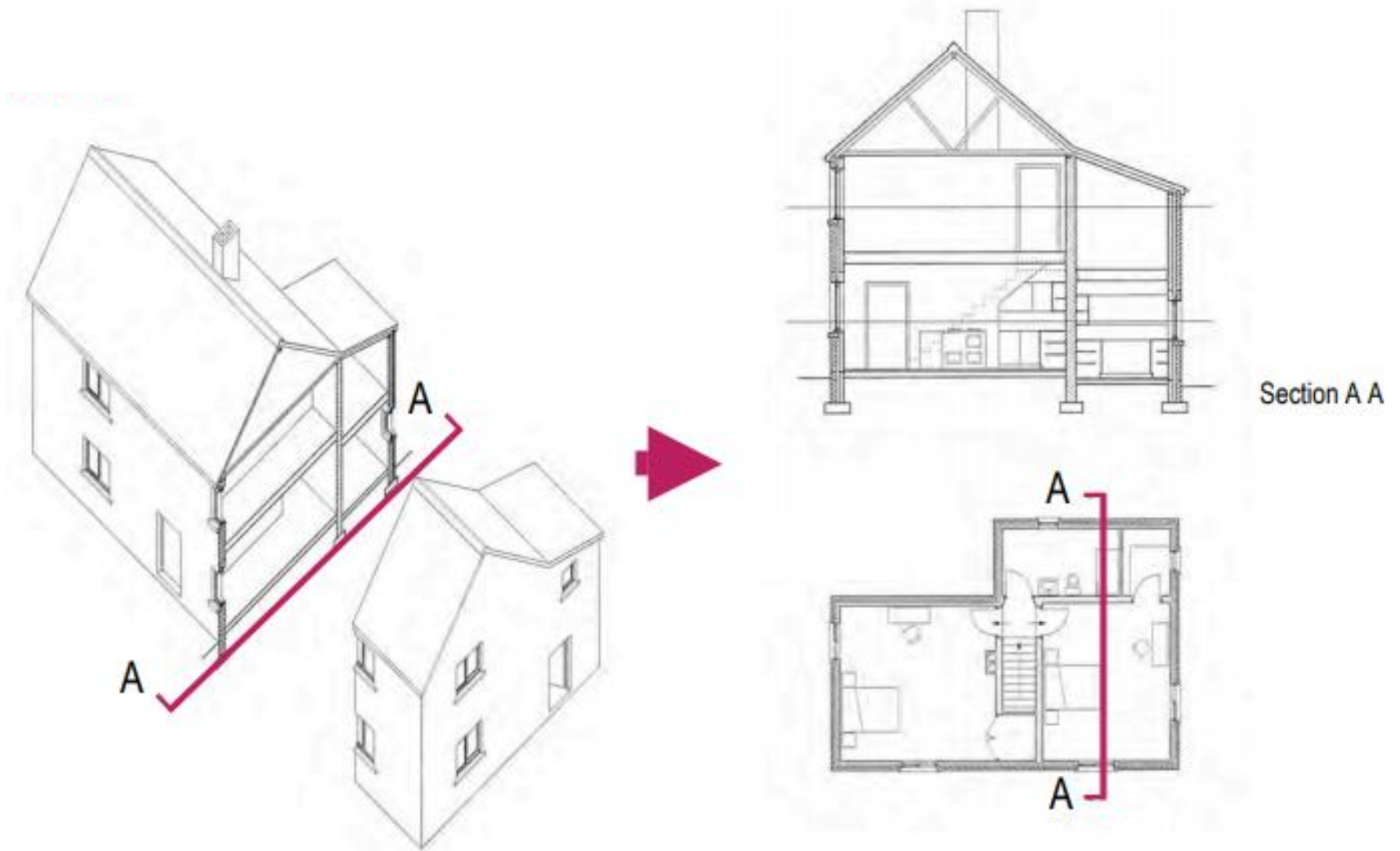


HOW TO DRAW AN ARCHITECTURAL ELEVATION?

Steps



EXAMPLE



REFERENCES

The references to multiple sources are text & figures
(sketches, drawings, pictures, photos,..etc.)

**ALL THE RIGHTS BELONG TO ORIGINAL
AUTHORS**



4



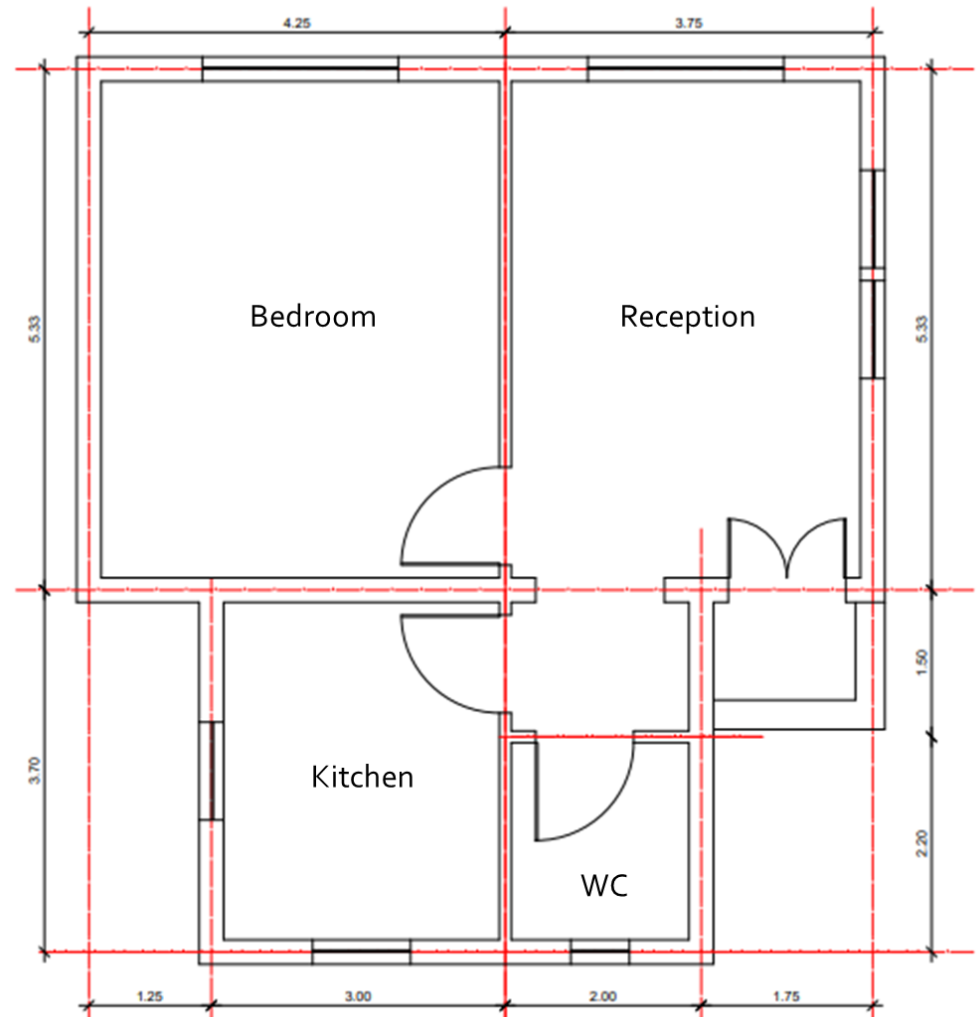
CLASSWORK #3

CLASSWORK#3

The figure below represents a plan for a small chalet.

You are required to:

1. Draw the elevation, (scale 1/50)



Main elevation



5



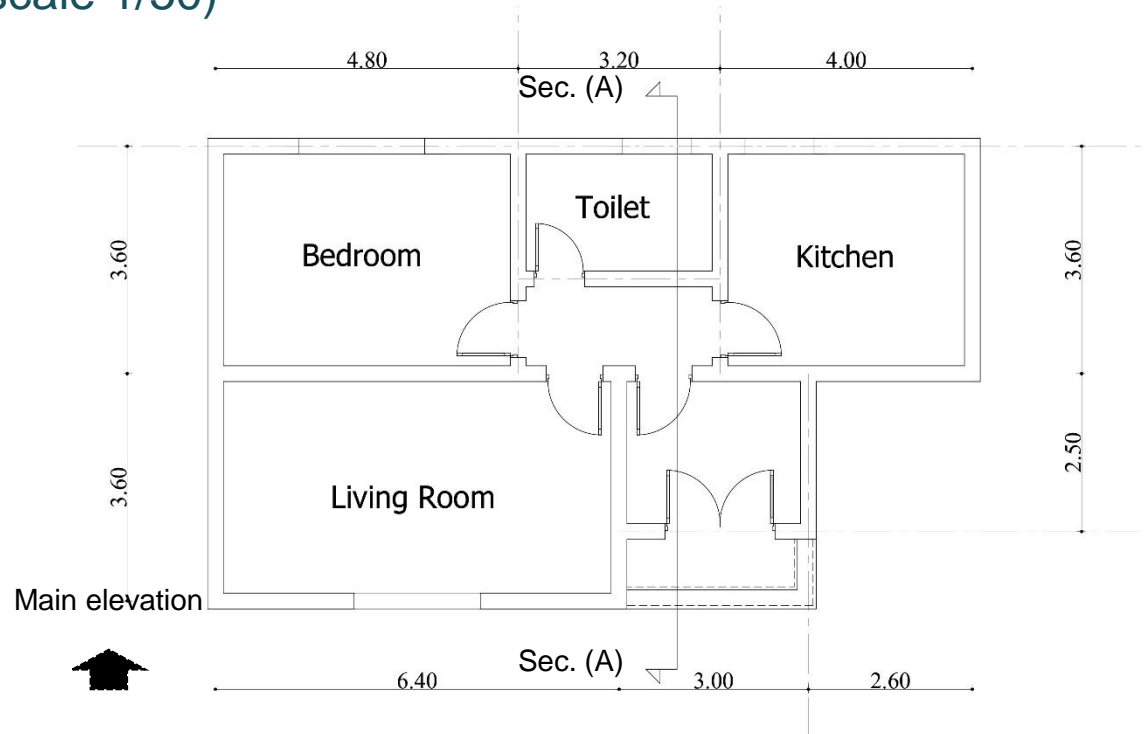
HOMEWORK#4

HOMEWORK # 4

The figure below represents a plan for a small chalet.

You are required to:

1. Draw the plan, (scale 1/50)
2. Draw the section, (scale 1/50)
3. Draw the elevation, (scale 1/50)



ANY QUESTIONS???

THANK YOU...